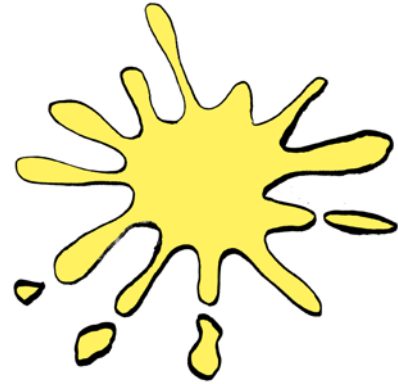




cotschen



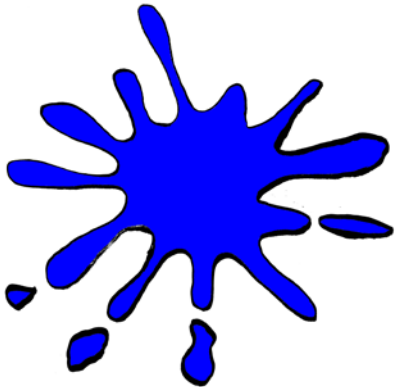
orandsch



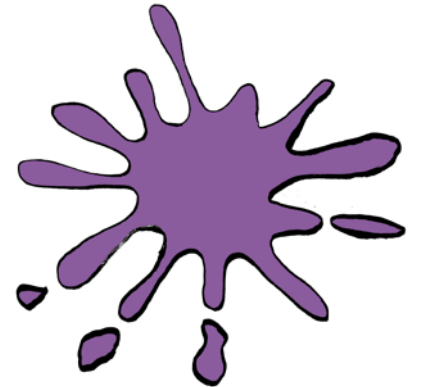
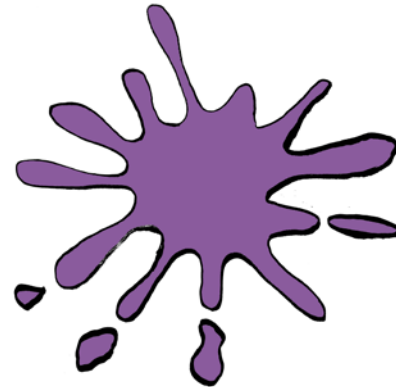
gelg



verd



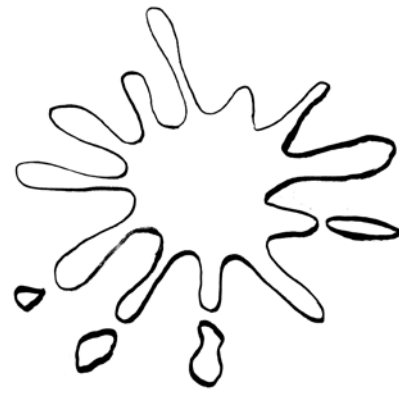
blau



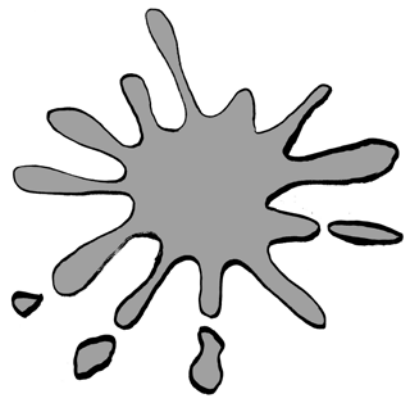
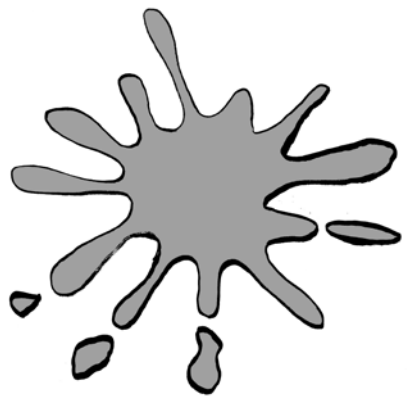
violet



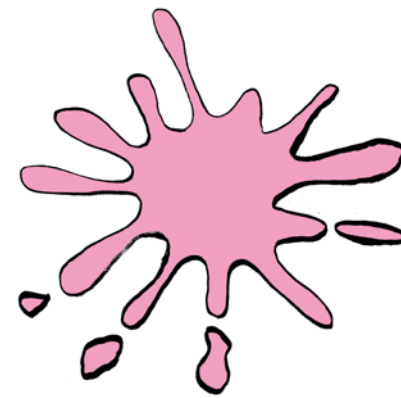
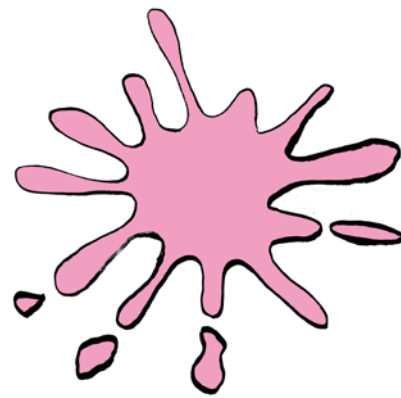
nair



alb



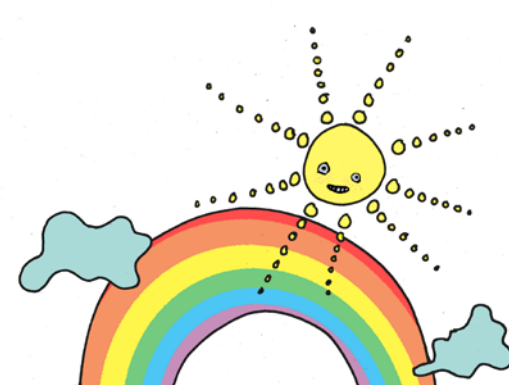
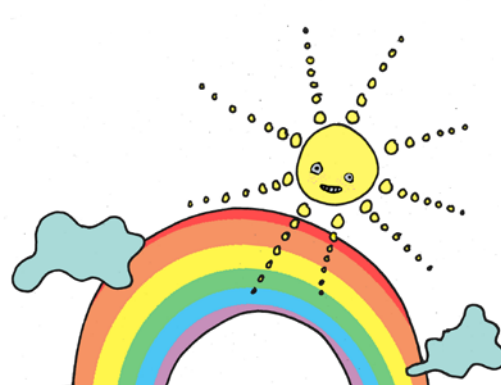
grisch



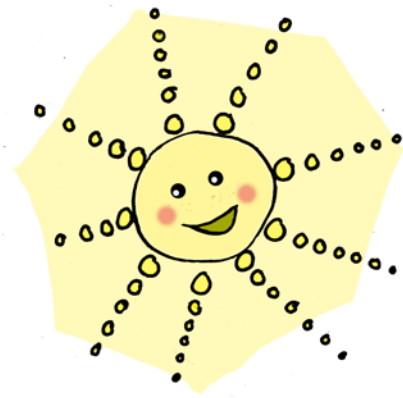
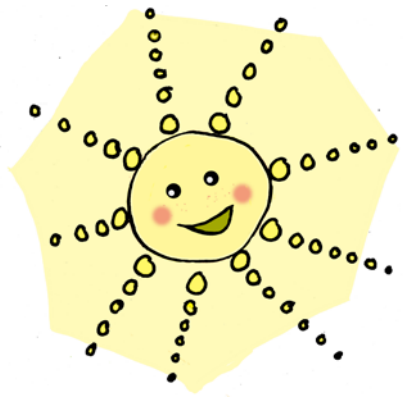
rösa



ils guots dad aua



l'arch San Martin



ils razs dal sulai

cotschen

orandsch

nair

alb

gelg

verd

grisch

rösa

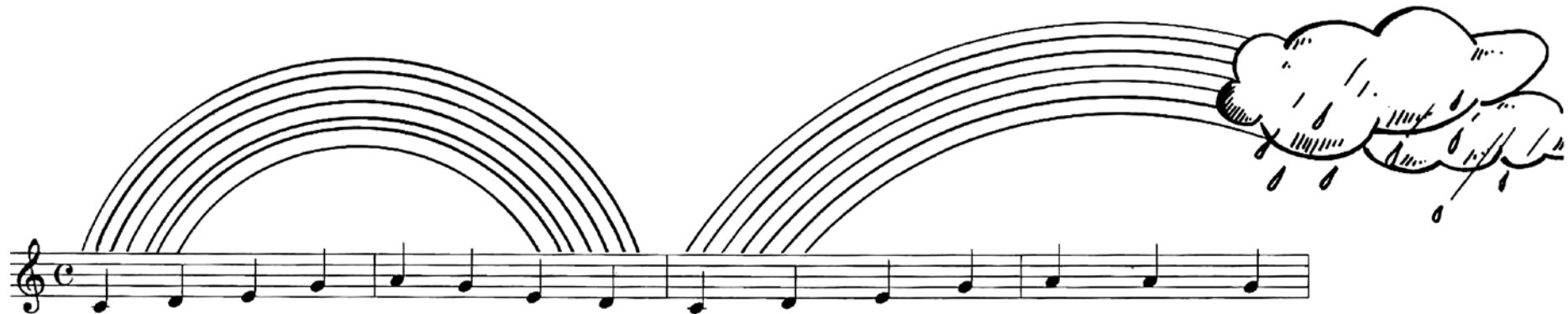
blau

violet

ils guots dad aua

l'arch San Martin

ils razs dal sulai



Tü bel a-arch San Marti-in, chi pit-tur'a tai sün tschêl?



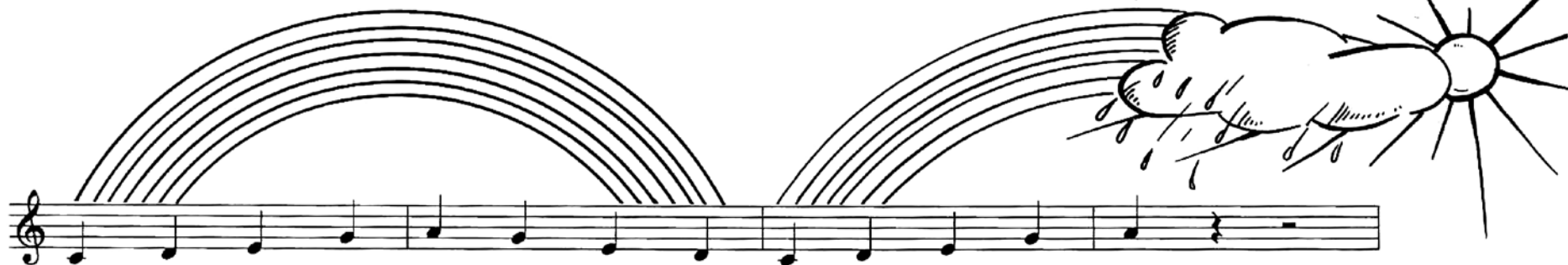
Mil-li pi-tschens guots dad a-ua,

(far canera da plövgia)

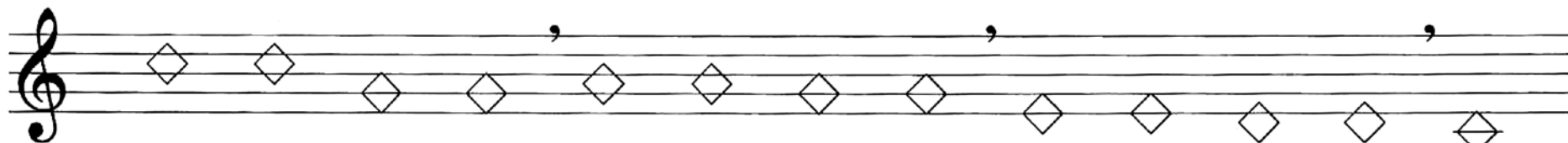


mil-li fins razz dal su-lai.

(triangul)



Oh, eu pit-tu-ress fich jent, sch'eu vess da tias cu-luors:



co-tschen, o-randsch, gelg e verd e blau e vi-o-let.

(laschar crodar fazölins da chiffon)