



la mamma



igl bab



la mattatscha



igl mattatsch



igl tat



la tatta





igl tgang



igl giat



la glioir



igl aviun



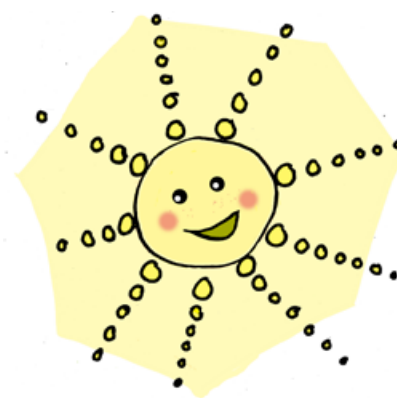
la balla



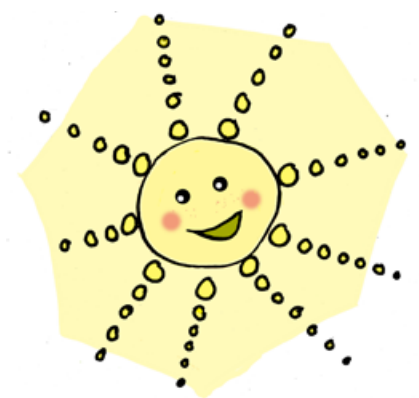
igl auto



la tgesa



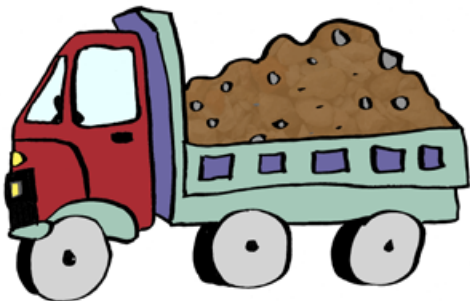
igl suglegl



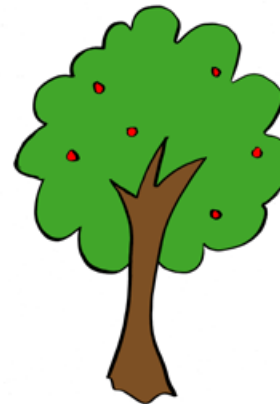
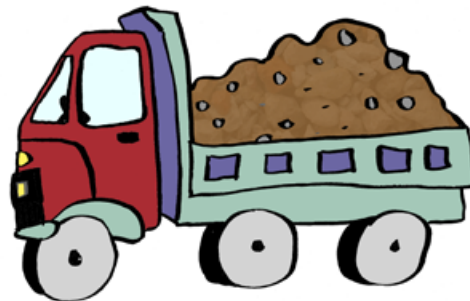
igl velo



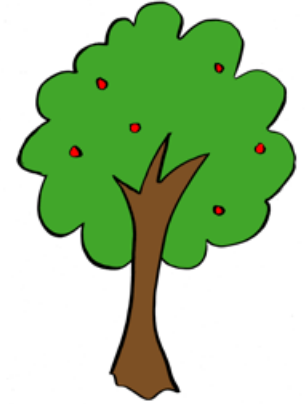
la puppa



igl camion



la planta



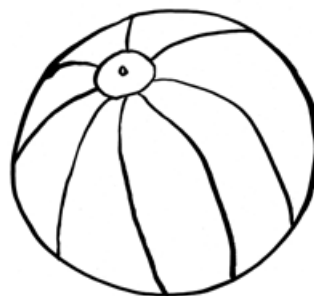
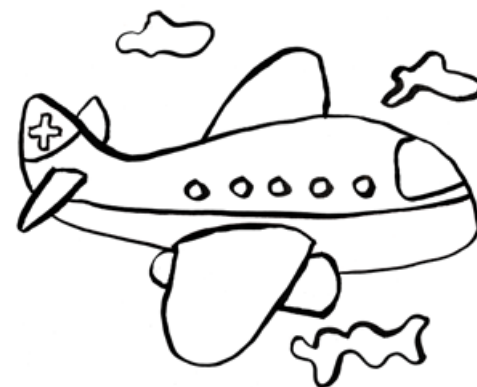
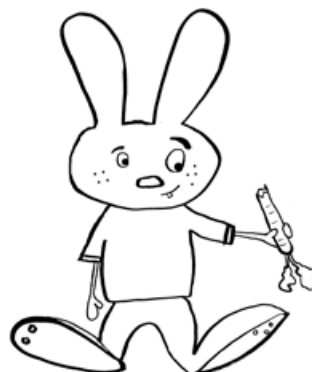
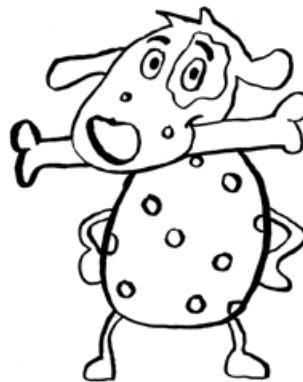


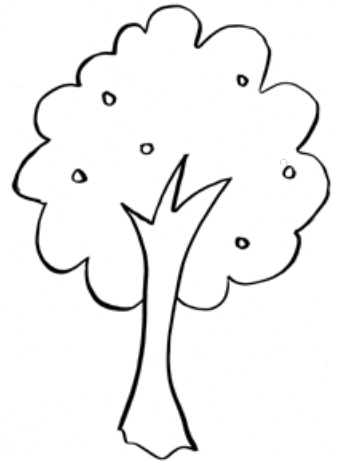
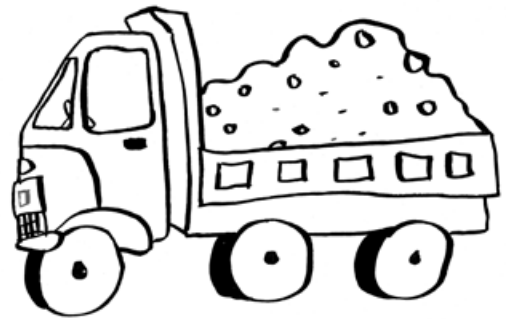
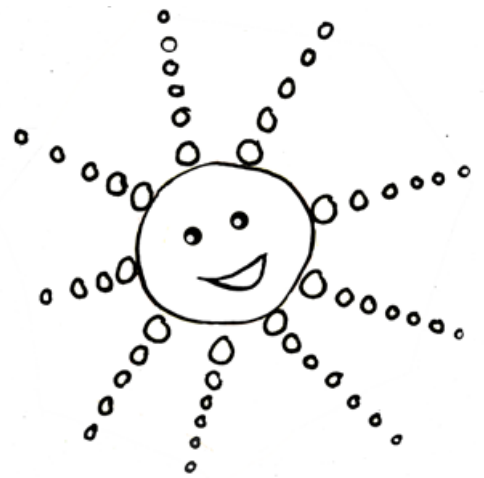
igl vent



igl savlung







la mamma

igl bab

igl tgang

igl giat

la mattatscha

igl mattatsch

la glioir

igl aviun

igl tat

la tatta

la balla

igl auto

igl vent

la tgesa

igl savlung

igl suglegl

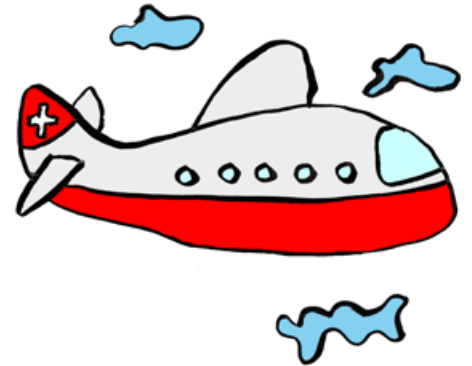
igl camiun

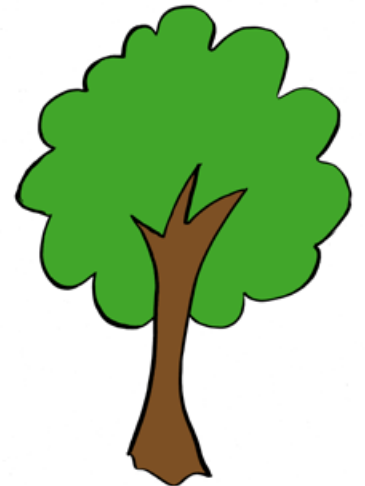
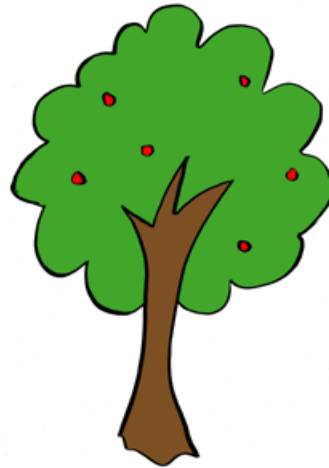
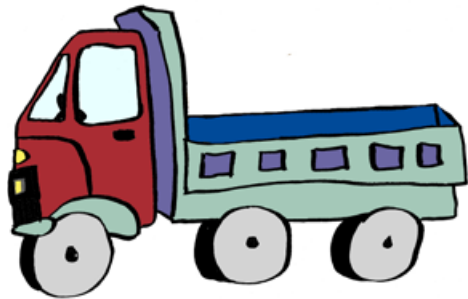
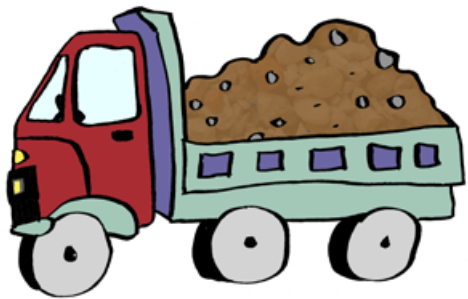
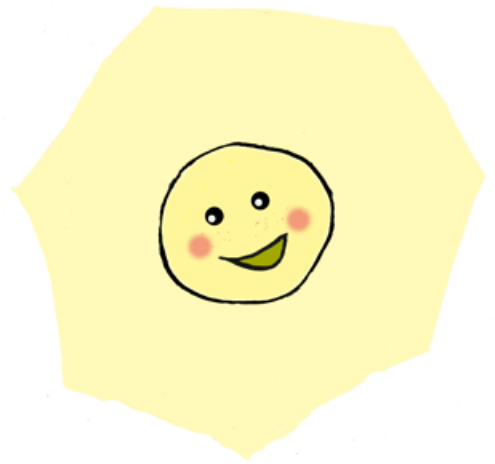
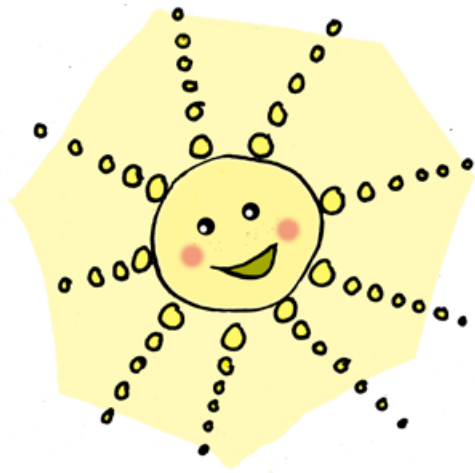
igl velo

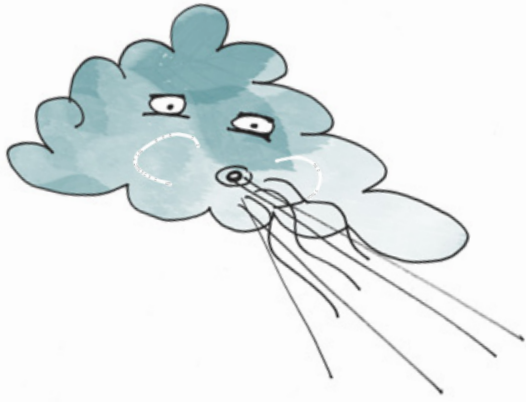
la planta

la puppa











Mia tges'ò ena porta,
treis fanestras, en tgamegn
ena lobia en po torta
ed anturn en bel curtegn.

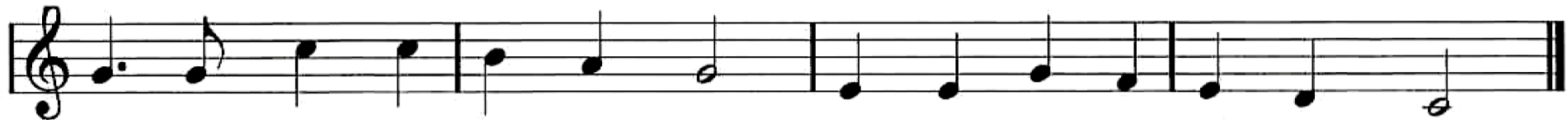
Rut Plouda, adatto an surmiran Lia Rumantscha

Polaschigna, Polaschign



Po-la-schi-gna, Po-la-schign, èn cun-taints an lour tge-sign.

(mussar la furma d'ena tgesa cun ageid digls mangs)



Dei igl vent: ia boff scu'n sturn tg'ella cro-da bod an-turn.

(buffar scu igl vent, uscheia tgi la tgesa croda mez anturn)

2. O tger vent, tge creist te, la vot betg metter adretg se?
Graztga, graztga, o tger vent, ainten tgesa svelt giains'aint.

(buffar scu igl vent e far star suspe se dretg la tgesa)

